

Hardball

HOLSTEIN

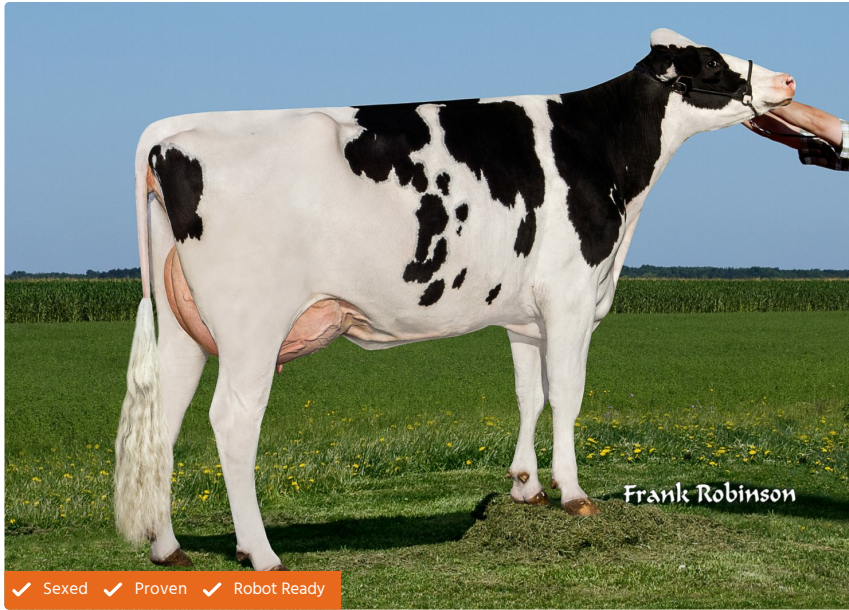
Full name: Delicious Charl Hardball-ET
Birth Date: -

Naab Code: 551H003851
Kappa Casein: AB

Reg No: HO840003203845446
Beta Casein: A2A2

Sire Stack: Charl x Supersire x Montross
Haplotypes: -

Call us and talk to a representative
0800 783 7258



✓ Sexed ✓ Proven ✓ Robot Ready

Type summary

Type Dtrs 0 Type Herds 0 Type Rel % 73

Pedigree

SIRE	Hurtgenlea Richard Charl
DAM	MS 78821 GP83
MGS	Seagull-Bay Supersire
MGD	MS Magical Nightout
MGGS	Bacon-Hill Montross
MGGD	MS Delicious Nightout VG85

Production summary

PLI	557	PLI Rel %	86	ACI	552
SCI	443	Milk kgs	557	Prod Rel %	98
Fat kgs	29.7	Fat %	0.08	Protein kgs	21.2
Protein %	0.03	Prod Dtrs	181	Prod Herds	20

Ecofeed
COW

92 REL. 57%

Ecofeed
HEIFER

104 REL. 81%

Health summary

SCC	-15	Mastitis	0	Lifespan	104
Fertility Index	0.1	Direct calving ease	0.5	TB Advantage	-0.7
Lameness Advantage	1.3	Calf Survival	3.4	Dairy Carcase	1
HealthyCow	143	EnviroCow	2.8	Digital Dermatitis	0.6
Maintenance	-20				

Type summary

Range -2 / +2

Type Merit	+0.46	High
Mammary	+1.26	High
Legs and Feet	+0.24	High
Stature	-1.72	Short
Chest Width	-0.87	Narrow
Body Depth	-0.47	Shallow
Angularity	-0.66	Non-Angular
Rump Angle	+0.44	Sloped
Rump Width	-0.98	Narrow
Rear Leg Side	+0.33	Sickle
Foot Angle	-0.80	Low
F. Udder Attachment	+0.62	Strong
Rear Udder Height	+0.90	High
Udder Support	+0.44	Strong
Udder Depth	+0.26	Shallow
Front Teat Placement	+0.66	Close
Teat Length	+0.28	Long
Rear Teat Placement	+1.10	Close
Teat Position Side	-0.13	Low
Temperament	-0.10	Low
Ease of Milk	-0.14	Low
Locomotion	+0.61	High
Condition Score	+0.48	High

Proof run: /2404

Type data supplied by Holstein UK. Production and Fitness data supplied by AHDB Dairy.

Cogent Breeding abide by the AHDB Dairy and Holstein UK established Code of Advertising.

Bulls tested free from genetic recessives will not show these codes for formatting reasons.