

Canonpower-P

HOLSTEINS

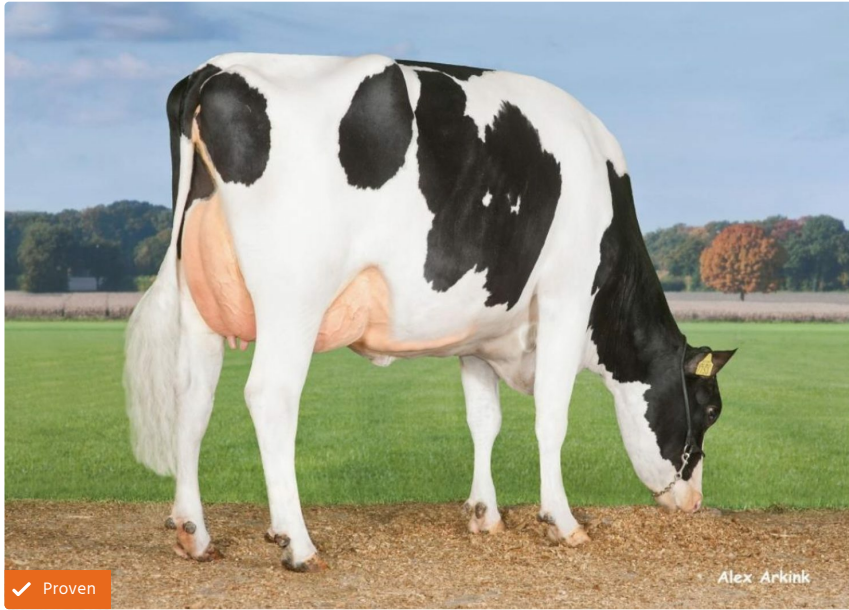
Full name: DE OOSTERHOF DG DV
CANONPOWER BLF BYF CVF POC
Birth Date: 12/05/2015

Naab Code: 224HO04185
Kappa Casein: AB

Reg No: HONLD000928710375
Beta Casein: A1A2

Sire Stack: Powerball-P x Mogul x
Observer
Haplotypes: HHP

Call us and talk to a representative
+44 (0)1829 773400



✓ Proven

Alex Arkink

Pedigree

SIRE	View-Home Powerball-P-ET
DAM	Dg Caley
MGS	Mountfield Ssi Dcy Mogul-ET TR TV TL TY TD
MGD	Larcrest Cale-ET VG-89
MGGS	De-Su Observer-ET TR TV TL TY TD VG-86
MGGD	Larcrest Crimson-ET TY EX-92 GMD DOM

Production summary

GTP1	2435	Milk	742	Net Merit (NM\$)	329
Fat	63	Grazing Merit (GM\$)	280	% Fat	0.12
Fluid Merit (FM\$)	264	Pro	42	Cheese Merit (CM\$)	358
% Pro	0.07	Prod Dtrs	110	Milk Rel	87
Prod Herd	56				

Health summary

SCE	2	DCE	1.8
SCS	3.15	PL	-1.3
DPR	-1.6	HCR	0.4
CCR	-1.4	Fertil Index	-1.1
Feed Effic	152	Livability	-3.4
EFI	8.8	g EFI	10
gIB	—		

Type summary

Range -3 / +3

Stature	+0.89
Short	Tall
Strength	+0.59
Frail	Strong
Body depth	+1.12
Shallow	Deep
Dairy Form	+1.78
Tight	Open Rib
Rump Angle	+0.46
High Pins	Sloped
Thuri Width	+1.93
Narrow	Wide
Rear Legs Side	+1.88
Posty	Sickle
Rear Legs Rear	-0.61
Hock In	Straight
Foot Angle	-0.91
Low	Steep
Feet & Legs Score	+0.05
Low	High
F. Udder Attachment	+1.08
Loose	Strong
Rear Udder Height	+2.08
Low	High
Rear Udder Width	+1.91
Narrow	Wide
Udder Cleft	+1.34
Weak	Strong
Udder Depth	+0.09
Deep	Shallow
Front Teat Placement	+1.75
Wide	Close
Rear Teat Placement	+2.19
Wide	Close
Teat Length	-0.12
Short	Long

Type summary

PTAT	1.07	UDC	1.23
FLC	-0.43	BSC	0.21